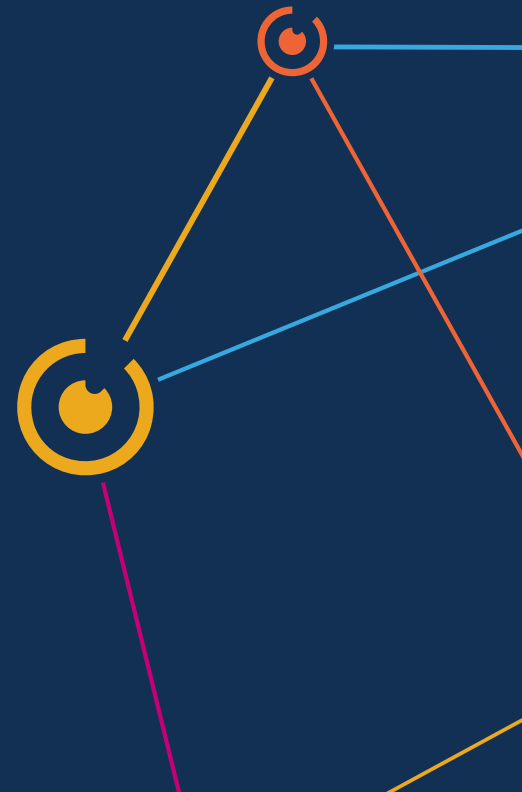




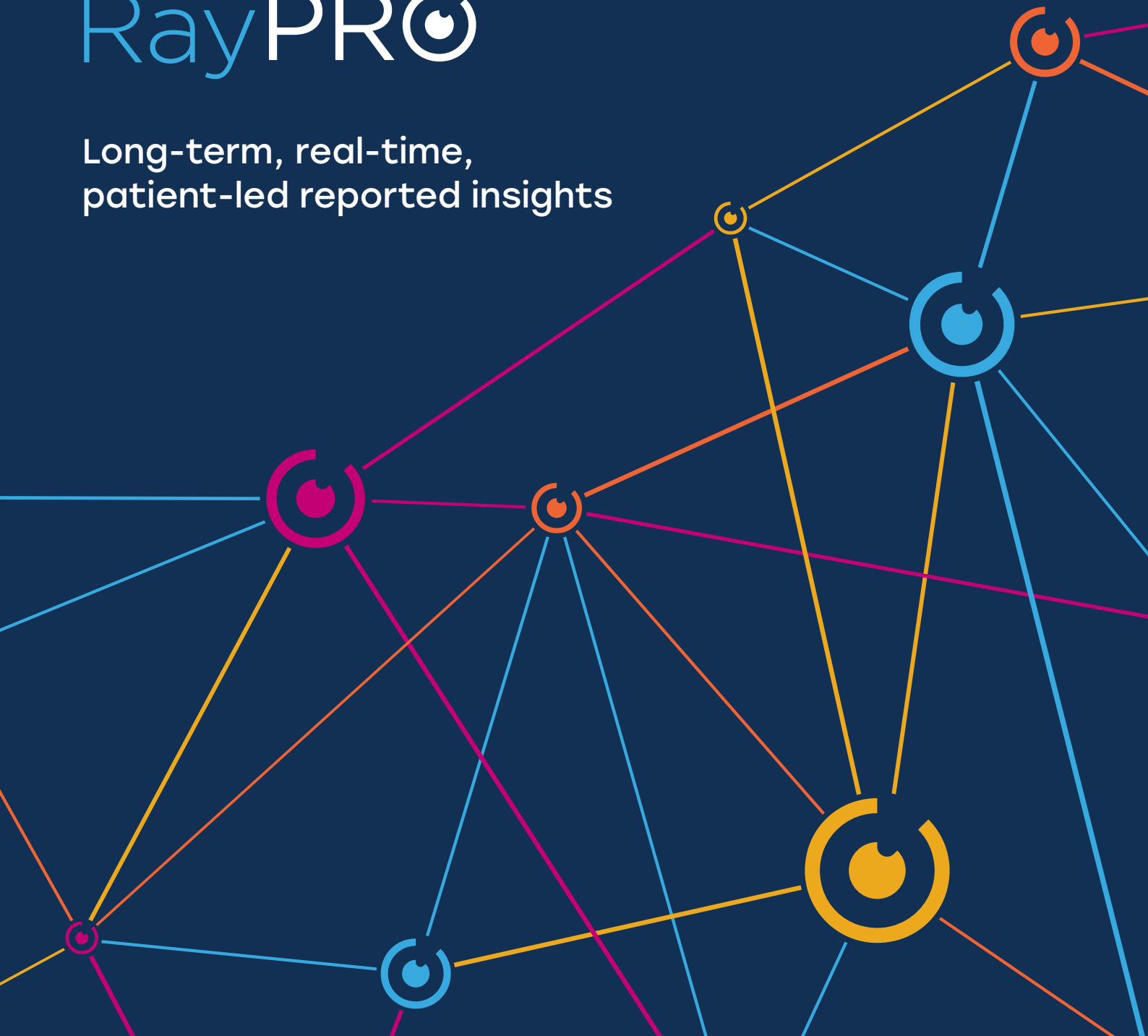
Want to get started with RayPRO?

Scan this QR to arrange a time to meet with Rayner's dedicated digital health account manager who can support your onboarding and set up process.

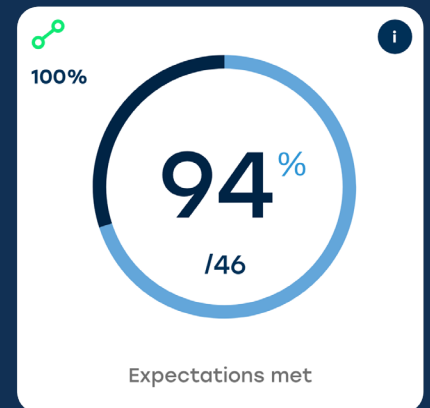
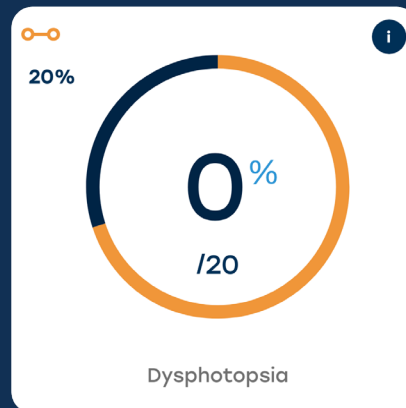
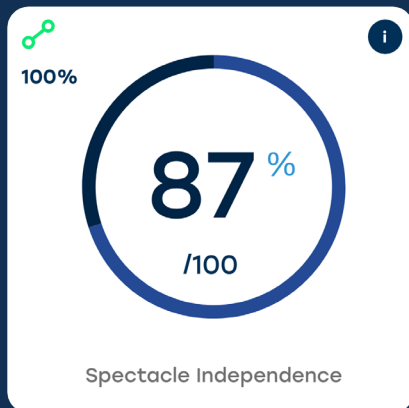
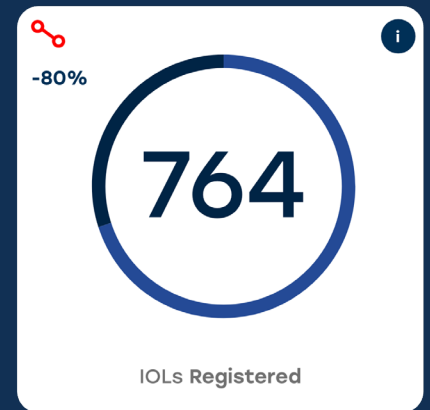
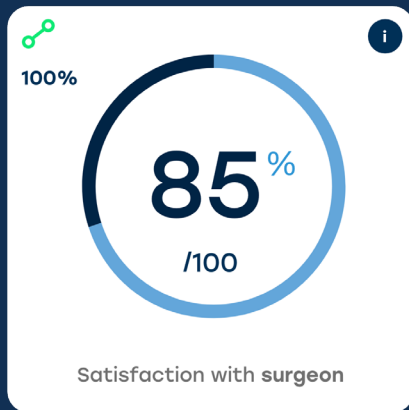


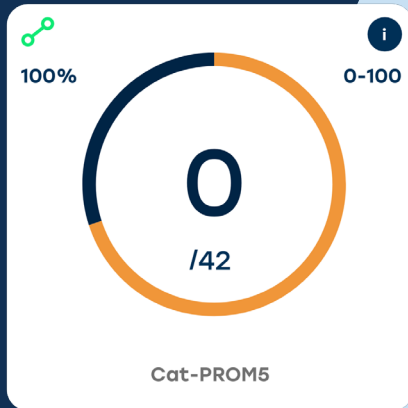
RayPRO

Long-term, real-time,
patient-led reported insights



What is RayPRO?



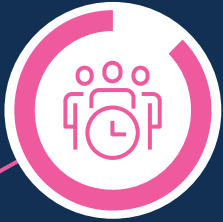


- / A truly **unique patient-reported outcomes** (PROMs) platform which has the ability to track patients over 3 years post-surgery.
- / Giving **actionable feedback and insight from patients** on their experiences and perspectives post-surgery.
- / Supporting all IOL brands and models as well as **validated clinical questionnaires**.
- / Utilising a **unique multiple-patient upload feature** to quickly and effectively add patients.

Features Overview

RayPRO is a comprehensive Patient Reported Outcome Measurements (PROMs) platform that allows clinics to gain essential data on patient outcomes which can be used to inform.





Clinically validated questionnaires

RayPRO uses globally recognised questionnaires to gain clinically validated patient reported outcomes pre- and post-surgery.



Comparison view

This unique feature within RayPRO allows users to directly compare the performance of up to four different IOLs patient data.



Multiple patient upload

Supporting fast and efficient upload of patients via an intuitive multiple patient upload system. In some cases, this can be automated with scripts.



Automated collection & reporting

RayPRO sends patient follow-up questionnaires automatically at predefined time points and displays the results in real-time.



Patient data security

RayPRO is built with patient data security as a top priority. It cooperates with all national data protection standards.

3 years of feedback, automated

RayPRO uses emails to collect patient insight at predefined time points so that you get the data without having to add workload. Delivering them via clinic-branded emails also adds value to the patient pathway.



**Want to get started
with RayPRO?**

Scan this QR to arrange a time to meet with Rayner's dedicated digital health account manager who can support your onboarding and set up process.



Experience

Two questions focusing on the patient experience.



Cat-PROM5

Clinically validated questionnaire designed by Sparrow JM, Frost NA, Donovan JL et al.



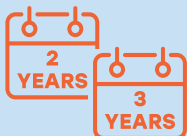
Quality of vision

Seven questions focused on functional vision.



Long-term quality of vision

Provides the ability for tracking neuro adaptive change in functional vision.



PCO and secondary procedures

The 2 and 3-year time points collect data on additional procedures that have been performed including YAG laser procedures and PCO.