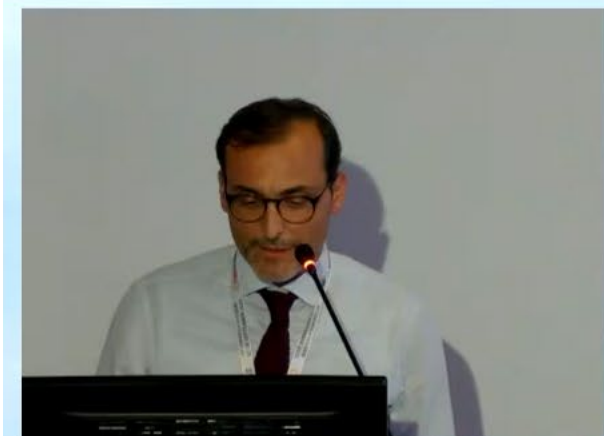


43RD CONGRESS OF THE  ESCRS 12-16 SEPTEMBER 2025

COPEN  **HAGEN** ²⁰/₂₅

Bella Center, Copenhagen - Denmark



Gaspare Monaco

Comparison Of Clinical Outcomes For Three Presbyopia-Correcting Iols: A Single-Center Prospective Study

Comparison Of Clinical Outcomes For Three Presbyopia-Correcting IOLs: A Single-Center Prospective Study

Dr. Gaspare Monaco,

Head of the Ophthalmology Unit at the IRCCS Policlinico San Donato, Italy

14/09/2025

 **GASPARE MONACO**
MEDICO - CHIRURGO

 **COPEN**  **HAGEN** ²⁰/₂₅

COPEN  **HAGEN** ²⁰/₂₅

Presbyopia-Correcting IOLs:



 AcrySof® IQ Vivity™
EXTENDED VISION IOL
Alcon



TECNIS
PureSee™ IOL
Johnson & Johnson



GALAXY
THE SPIRAL IOL
 Rayner

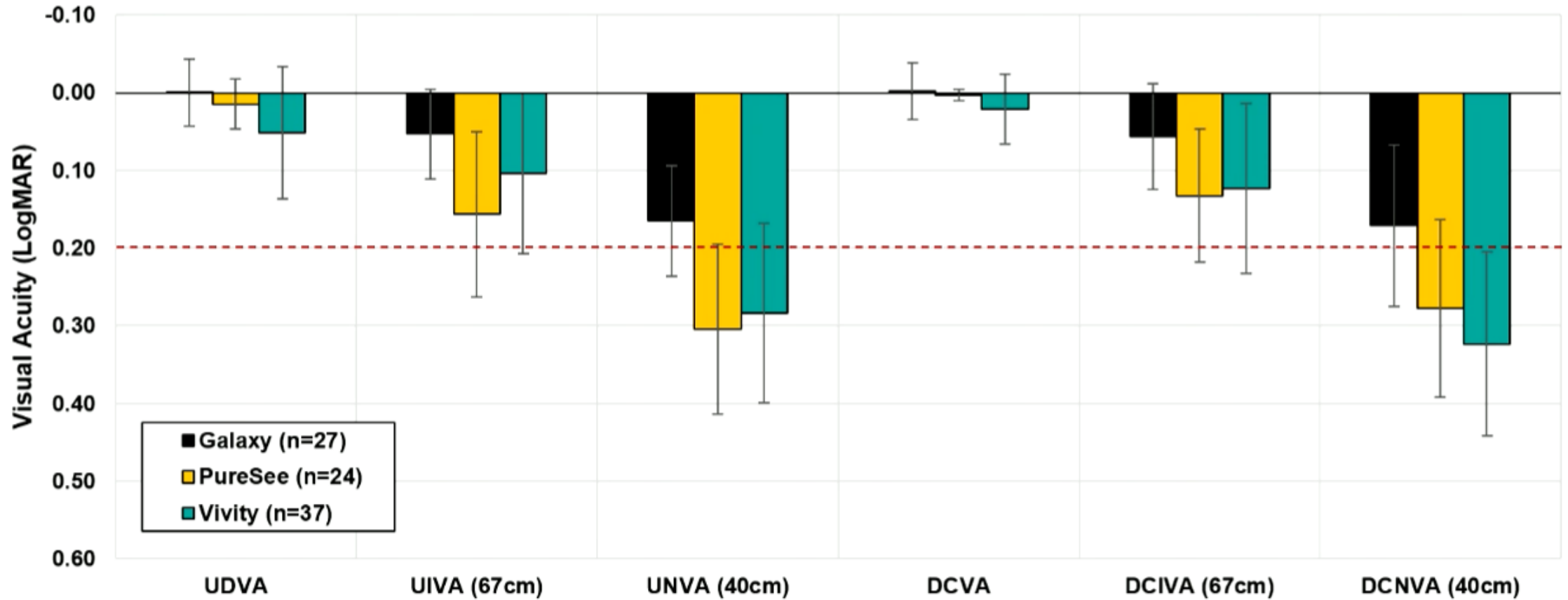
Demographics:

Table 1. Intragroup comparison of baseline characteristics.

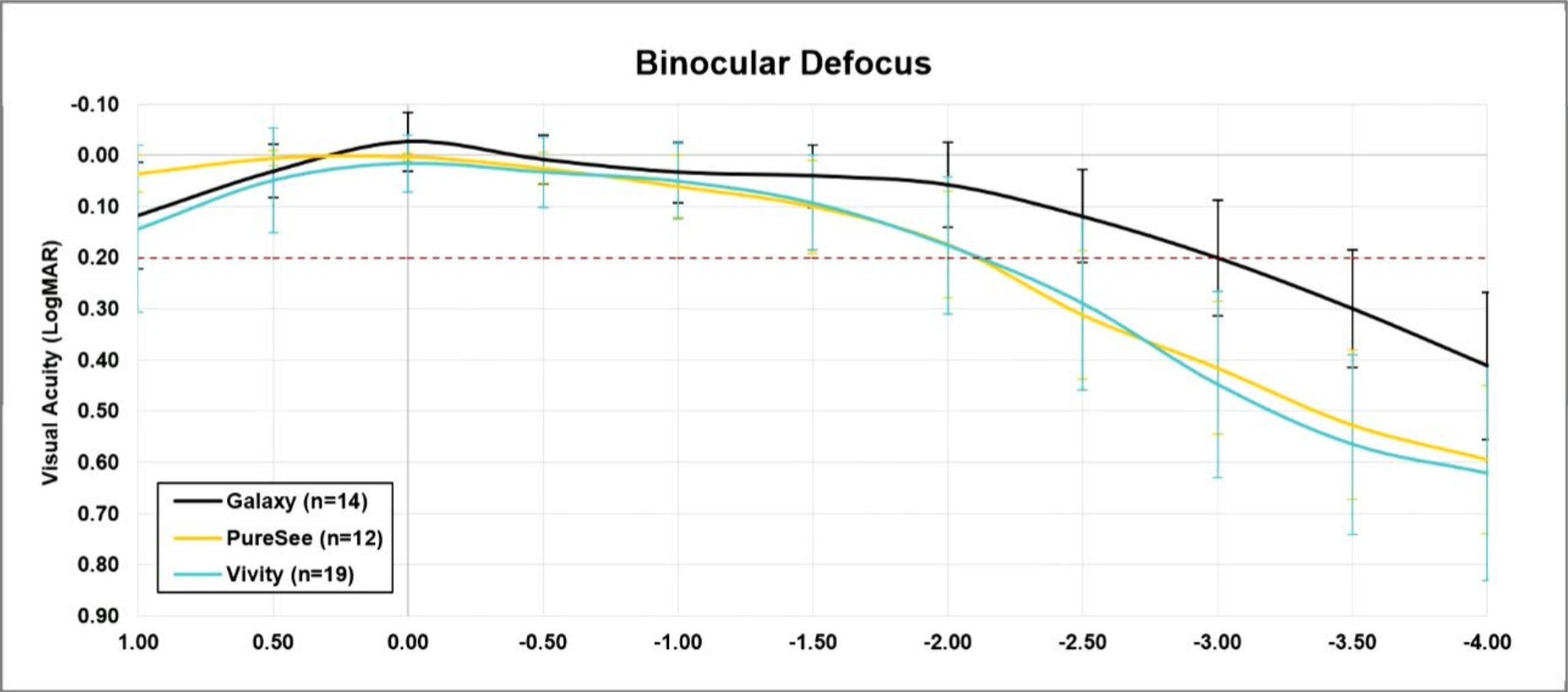
| Parameter | Vivity | PureSee | Galaxy |
|------------------------------|----------|---------|----------|
| Patient/eyes (n) | 19 / 37 | 12 / 24 | 14 / 27 |
| Mean age (y) | 67 ± 7 | 72 ± 8 | 65 ± 11 |
| Sex, n (%) | | | |
| Female | 6 (32%) | 3 (25%) | 11 (79%) |
| Male | 13 (68%) | 9 (75%) | 3 (21%) |
| Corneal Analyzer (mm) | | | |
| Mean Photopic Pupil | 3.13 | 3.03 | 3.04 |
| Mean Mesopic Pupil | 3.70 | 3.96 | 3.83 |
| Mean Scotopic Pupil | 4.96 | 4.84 | 5.07 |
| Mean Mesopic Kappa x | 0.30 | 0.29 | 0.25 |
| FLACS (%) | 89% | 100% | 100% |
| Refractive Accuracy | | | |
| Refractive Target (D) | -0.27 | -0.34 | 0.00 |
| Post-op SEQ (D) | -0.23 | -0.17 | -0.23 |

RESULTS:

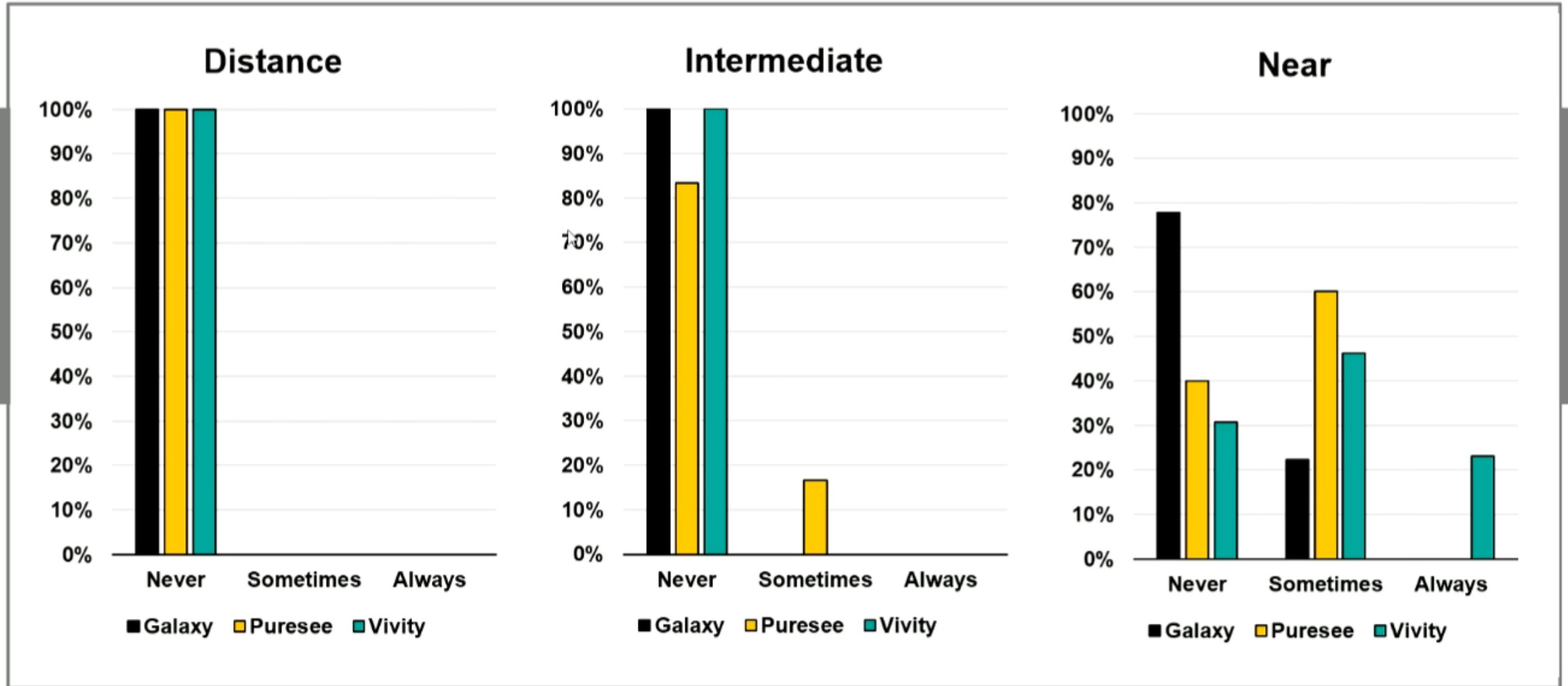
Monocular Visual Acuity



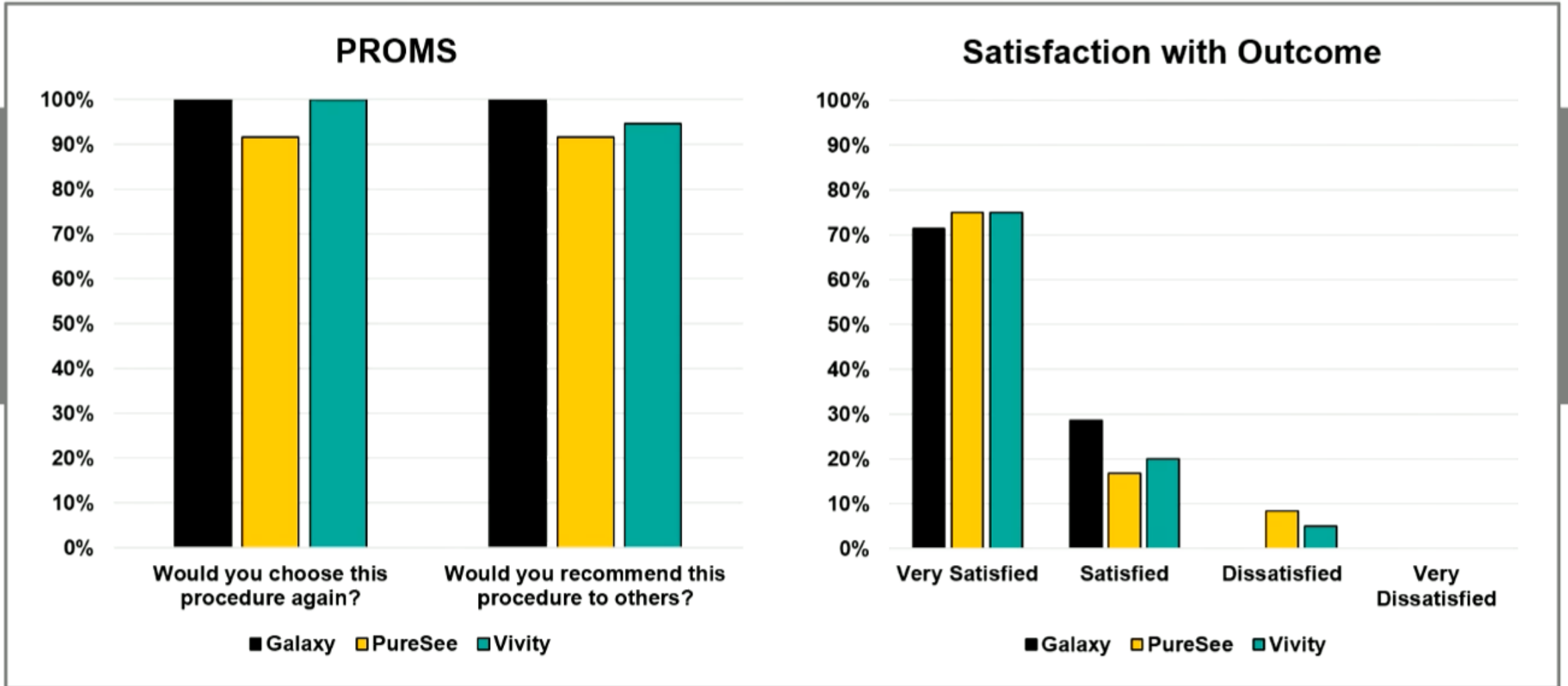
RESULTS:



RESULTS: How frequently do you wear glasses for...?



RESULTS:



CONCLUSION:

All patients had comparable baseline characteristics.

All 3 PCIOLs showed consistent refractive accuracy

- Vivity showed the closest refractive accuracy to target (+0.03D)
- PureSee showed slight hyperopia verses target (+0.19D)
- Galaxy showed slight myopia verses target (-0.23D) (*new updated constants > iolcon.org*)

Vivity & PureSee showed Increased Range of Focus (IROF) performance:

- Vivity: range of focus >0.2 LogMAR = -2.2D (45cm)
- PureSee: range of focus >0.2 LogMAR = -2.2D (45cm)

Galaxy showed Full Range of Focus (FROF) performance:

- Galaxy: range of focus >0.2 LogMAR = -3.0D (33cm)