

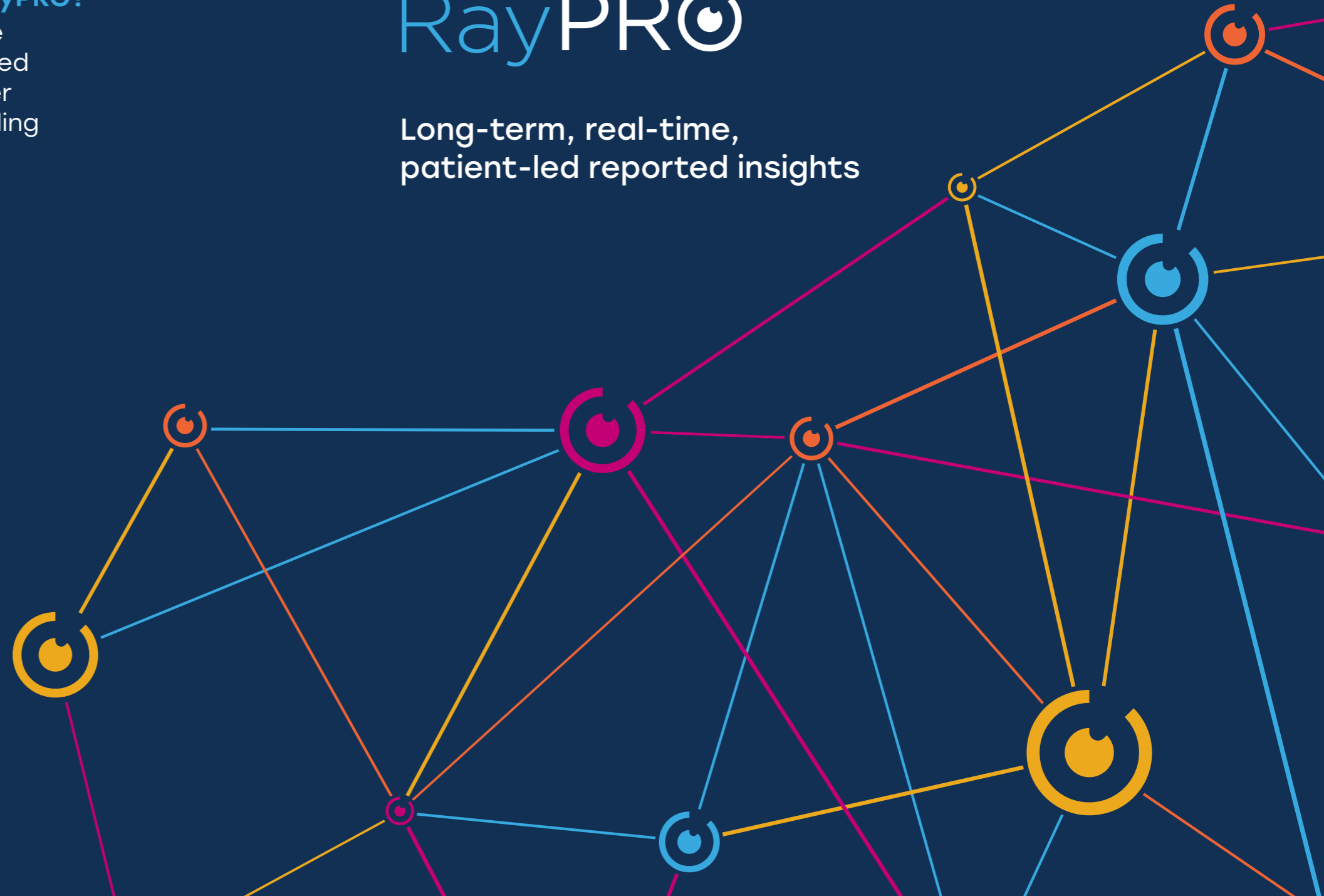


### Want to get started with RayPRO?

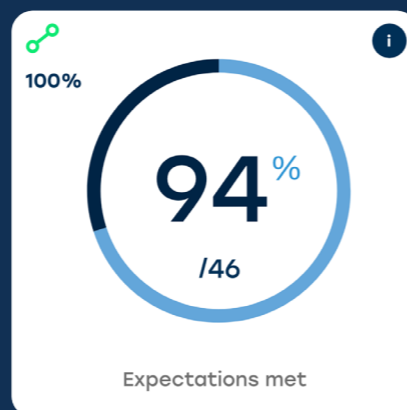
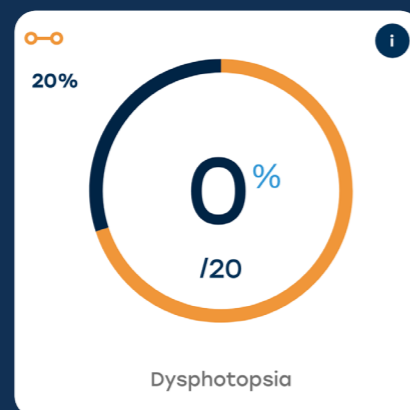
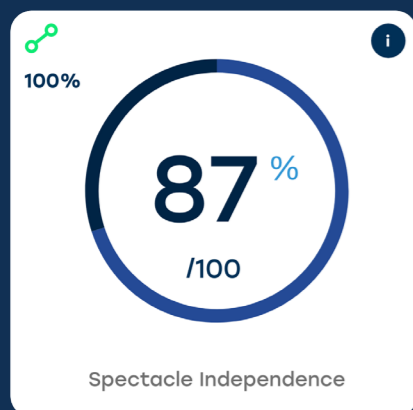
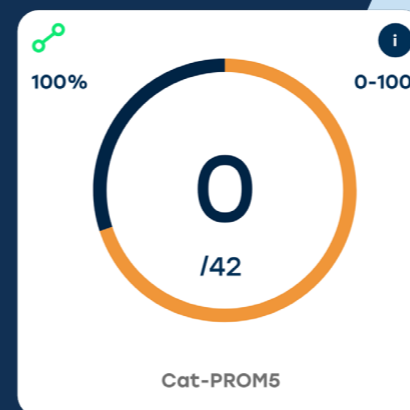
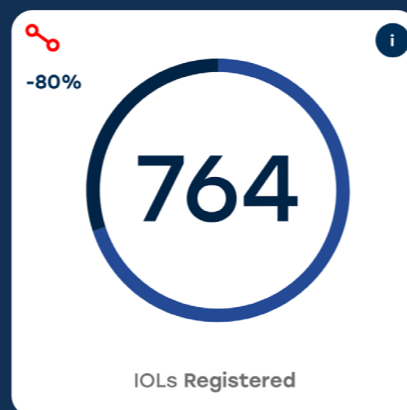
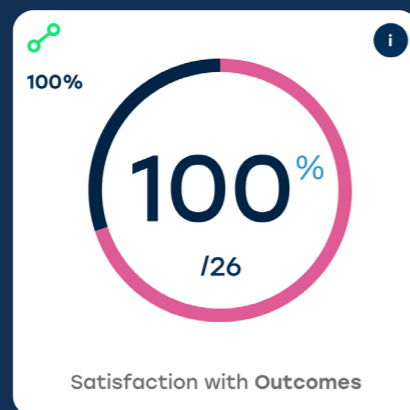
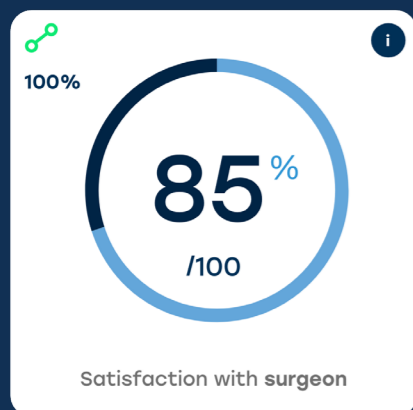
Scan this QR to arrange a time to meet with Rayner's dedicated digital health account manager who can support your onboarding and set up process.

# RayPRO

Long-term, real-time, patient-led reported insights



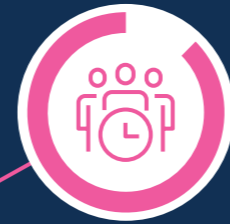
# What is RayPRO?



- / A truly **unique patient-reported outcomes** (PROMs) platform which has the ability to track patients over 3 years post-surgery.
- / Giving **actionable feedback and insight from patients** on their experiences and perspectives post-surgery.
- / Supporting all IOL brands and models as well as **validated clinical questionnaires**.
- / Utilising a **unique multiple-patient upload feature** to quickly and effectively add patients.

# Features Overview

RayPRO is a comprehensive Patient Reported Outcome Measurements (PROMs) platform that allows clinics to gain essential data on patient outcomes which can be used to inform.



## Clinically validated questionnaires

RayPRO uses globally recognised questionnaires to gain clinically validated patient reported outcomes pre- and post-surgery.



## Comparison view

This unique feature within RayPRO allows users to directly compare the performance of up to four different IOLs patient data.



## Multiple patient upload

Supporting fast and efficient upload of patients via an intuitive multiple patient upload system. In some cases, this can be automated with scripts.



## Automated collection & reporting

RayPRO sends patient follow-up questionnaires automatically at predefined time points and displays the results in real-time.



## Patient data security

RayPRO is built with patient data security as a top priority. It cooperates with all national data protection standards.

# 3 years of feedback, automated

RayPRO uses emails to collect patient insight at predefined time points so that you get the data without having to add workload. Delivering them via clinic-branded emails also adds value to the patient pathway.



## Want to get started with RayPRO?

Scan this QR to arrange a time to meet with Rayner's dedicated digital health account manager who can support your onboarding and set up process.



7  
DAYS

## Experience

Two questions focusing on the patient experience.



1  
MONTH

## Cat-PROM5

Clinically validated questionnaire designed by Sparrow JM, Frost NA, Donovan JL et al.



3  
MONTHS

## Quality of vision

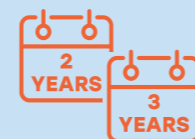
Seven questions focused on functional vision.



1  
YEAR

## Long-term quality of vision

Provides the ability for tracking neuro adaptive change in functional vision.



2  
YEARS

3  
YEARS

## PCO and secondary procedures

The 2 and 3-year time points collect data on additional procedures that have been performed including YAG laser procedures and PCO.